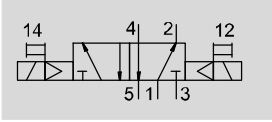



Solenoid valves VSNC


Technical data – 5/2-way, double solenoid

Function

3/2-way or 5/2-way valve,
convertible



 - Operating pressure
1.5 ... 8 bar

 - Temperature range
-20 ... +60 °C



General technical data		VSNC-FT-B52-D-G14-FN VSNC-FT-B52-D-N14-FN	VSNC-FT-B52-D-G14-FN-1A1
Valve function		5/2-way, double solenoid	
Width	[mm]	32	
Design		Poppet seat	
Sealing principle		Soft	
Type of actuation		Electrical	
Reset method		Mechanical spring	
Type of control		Piloted	
Pilot air supply port		Internal	
Exhaust air function		With flow control	
Manual override		Non-detenting, detenting	
Type of mounting		With through-hole	
Connection for venting hole		Not ducted	
Mounting position		Any	
Non-overlapping		No	
Direction of flow		Non-reversible	
Standard nominal flow rate	[l/min]	1000	
b value		0.24	
C value	[l/sbar]	4.6	
Pneumatic connection	1, 3, 5 2, 4	G1/4 or NPT1/4-18 Port pattern to NAMUR	
Conforms to standard		VDI/VDE 3845 (NAMUR)	
Degree of protection		-	IP65, IP67
Product weight	[g]	519	670

Solenoid valves VSNC

Technical data – 5/2-way, double solenoid

Operating and environmental conditions		
Operating medium		Compressed air to ISO 8573-1:2010 [7:4:4]
Note on operating/pilot medium		Lubricated operation possible (in which case lubricated operation will always be required)
Operating pressure	[bar]	1.5 ... 8
Ambient temperature	[°C]	-20 ... +60
Temperature of medium	[°C]	-20 ... +60
Corrosion resistance class CRC ¹⁾		2

1) Corrosion resistance class CRC 2 to Festo standard FN 940070

Moderate corrosion stress. Indoor applications in which condensation may occur. External visible parts with primarily decorative requirements for the surface and which are in direct contact with the ambient atmosphere typical for industrial applications.

Electrical data			
		VSNC-FT-B52-D-G14-FN VSNC-FT-B52-D-N14-FN	VSNC-FT-B52-D-G14-FN-1A1
Electrical connection		–	Type A to EN 175301-803
Coil characteristics, 24 V DC	[W]	See solenoid coil, to be ordered separately	0.7
Changeover time	[ms]	16	16
Permissible voltage fluctuations	[%]	–	±10

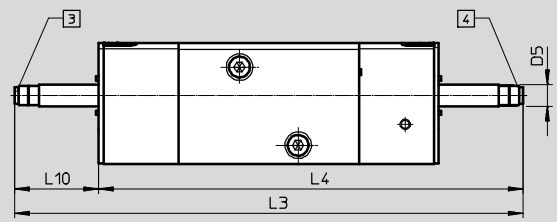
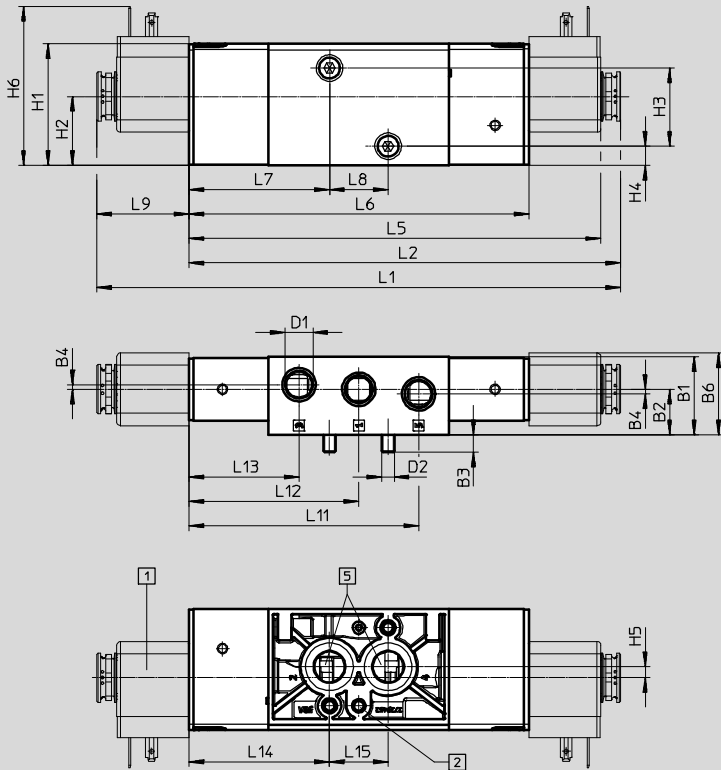
Materials	
1) Housing	Wrought aluminium alloy
2) Seals	NBR
–	RoHS compliant

Solenoid valves VSNC

Technical data – 5/2-way, double solenoid

Dimensions

[Download CAD data →](#)



VSNC-F-...-MD-...-FN
 VSNC-F-...-D-...-FN
 VSNC-FT-...-D-...-FN

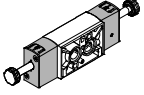
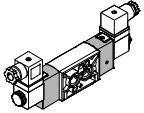
- 1 Solenoid coil
- 2 \varnothing 5x4 to DIN 913-M5x10-45h
- 3 Auxiliary pilot air exhaust port 82, M5
- 4 Auxiliary pilot air exhaust port 82, M5
- 5 Working port 2 and 4, port pattern to NAMUR

Type	B1	B2	B3	B4	B6	D1	D2	D5 - \varnothing	H1	H2	H3	H4	H5	H6	L1
VSNC-F-P53C-MD-G14-FN	31.8	18.6	7.3	1.9	33.4	G $\frac{1}{4}$	M5	9	49.8	28.2	32	7.8	4.4	-	-
VSNC-F-P53U-MD-G14-FN															
VSNC-F-P53E-MD-G14-FN															
VSNC-F-P53C-MD-N14-FN															
VSNC-F-P53U-MD-N14-FN															
VSNC-F-P53E-MD-N14-FN															

Type	L2	L3	L4	L5	L6	L7	L8	L9	L10	L11	L12	L13	L14	L15
VSNC-F-P53C-MD-G14-FN	-	208	173.6	-	139.2	57.6	24	-	34.4	94.1	69.6	45.1	57.6	24
VSNC-F-P53U-MD-G14-FN														
VSNC-F-P53E-MD-G14-FN														
VSNC-F-P53C-MD-N14-FN														
VSNC-F-P53U-MD-N14-FN														
VSNC-F-P53E-MD-N14-FN														

Solenoid valves VSNC

Technical data – 5/2-way, double solenoid

Ordering data – Valves		
Directional control valve without solenoid coil		
	Part No.	Type
	577278	VSNC-FT-B52-D-G14-FN
	577280	VSNC-FT-B52-D-N14-FN
Directional control valve with Ex i solenoid coil		
	577298	VSNC-FT-B52-D-G14-FN-1A1